

For Windows only

Supported products

TD-01 Portable

Recommended hardware

PC with Intel Core 2 Duo or faster processor
and 1 GB or more memory

Supported operating systems

Windows 8.1 (32-bit and 64-bit editions)
Windows 10 (32-bit and 64-bit editions)
as of March, 2020

Precautions before installation

Install TdDataPicker before connecting the computer by USB.

Microsoft, Windows and Windows Media are either registered trademarks or trademarks of Microsoft Corporation in the United States and/or other countries.

Other company names and product names in this document are the trademarks or registered trademarks of their respective owners.

END USER LICENSE AGREEMENT

IMPORTANT:

PLEASE CAREFULLY READ THE LICENSE AGREEMENT HEREIN BEFORE USING THE SOFTWARE.

THE RIGHT TO USE THE SOFTWARE IS GRANTED ONLY ON THE CONDITION THAT YOU AGREE TO THE LICENSE AGREEMENT. IN CASE YOU DO NOT AGREE TO THE LICENSE AGREEMENT, DO NOT INSTALL THE SOFTWARE. IF YOU HAVE ALREADY INSTALLED THE SOFTWARE, STOP THE USE AND UNINSTALL THE SOFTWARE. UNAUTHORIZED REPRODUCTION OR DISTRIBUTION OF THE SOFTWARE, OR ANY PORTION OF IT, MAY RESULT IN SEVERE CIVIL AND CRIMINAL PENALTIES, AND WILL BE PROSECUTED TO THE MAXIMUM EXTENT POSSIBLE UNDER LAW.

This License Agreement with limited warranty is a legal agreement between you (either an individual or a single entity) and TEAC Corporation ("TEAC") for the SOFTWARE, which include computer software and electronic documentation.

1. GRANT OF LICENSE.

TEAC grants to you the right to use the SOFTWARE only in combination with the respective TEAC products.

2. COPYRIGHT/TRADEMARK.

All title and copyrights in and to the SOFTWARE and any copies thereof are owned by TEAC or a supplier to TEAC. The SOFTWARE is protected by Japanese copyright law, international treaty provisions, and all other applicable national laws. Furthermore, you shall acknowledge that some logos and/or marks collected in the SOFTWARE might be trademarks of third parties and protected under the applicable laws. When you use such logo or mark as a trademark, you shall get a license from the respective owner on

your own responsibility. TEAC does not assume any liability for and from your use thereof.

3. RESTRICTIONS.

You may not distribute copies of the SOFTWARE to third parties. You may not reverse engineer, decompile, or disassemble the SOFTWARE, except and only to the extent that applicable law notwithstanding this limitation expressly permits such activity. You may not rent or lease the SOFTWARE. You may not reproduce the SOFTWARE except for archival purpose.

4. TERMINATION.

Your rights under this Agreement terminate upon the disposal of all copies of the SOFTWARE, or without prejudice to any other rights, TEAC may terminate this Agreement if you fail to comply with the terms and conditions of this Agreement. In such event, you must destroy all copies of the SOFTWARE.

5. LIMITED WARRANTY.

TEAC warrants that the SOFTWARE will be usable for the purpose expressed on TEAC's document when properly installed on computer. TEAC does not warrant that the operation of the SOFTWARE will be uninterrupted or error free, and that the SOFTWARE fits for any particular purpose.

6. NO LIABILITY FOR CONSEQUENTIAL DAMAGES.

TO THE MAXIMUM EXTENT PERMITTED BY APPLICABLE LAW, IN NO EVENT SHALL TEAC BE LIABLE FOR ANY SPECIAL INCIDENTAL, INDIRECT, OR CONSEQUENTIAL DAMAGES WHATSOEVER (INCLUDING, WITHOUT LIMITATION, DAMAGES FOR LOSS OF BUSINESS PROFITS, BUSINESS INTERRUPTION, LOSS OF BUSINESS INFORMATION, OR ANY OTHER PECUNIARY LOSS) ARISING OUT OF THE USE OF OR INABILITY TO USE THE SOFTWARE, EVEN IF TEAC HAS BEEN ADVISED OF THE POSSIBILITY OF SUCH DAMAGES. BECAUSE SOME STATES AND JURISDICTIONS DO NOT ALLOW THE EXCLUSION OR LIMITATION OF LIABILITY FOR CONSEQUENTIAL OR INCIDENTAL DAMAGES, THE ABOVE LIMITATION MAY NOT APPLY TO YOU.

7. MISCELLANEOUS.

This Agreement is governed by the laws of Japan.

Should you have any questions concerning this Agreement, or if you desire to contact TEAC for any reason, please write to the address set forth below:

TEAC CORPORATION
1-47 Ochiai, Tama-shi, Tokyo 206-8530, Japan
TEAC Load Cell site (Inquiry)
<https://loadcell.jp/en/contact.html>

TdDataPicker installation procedures

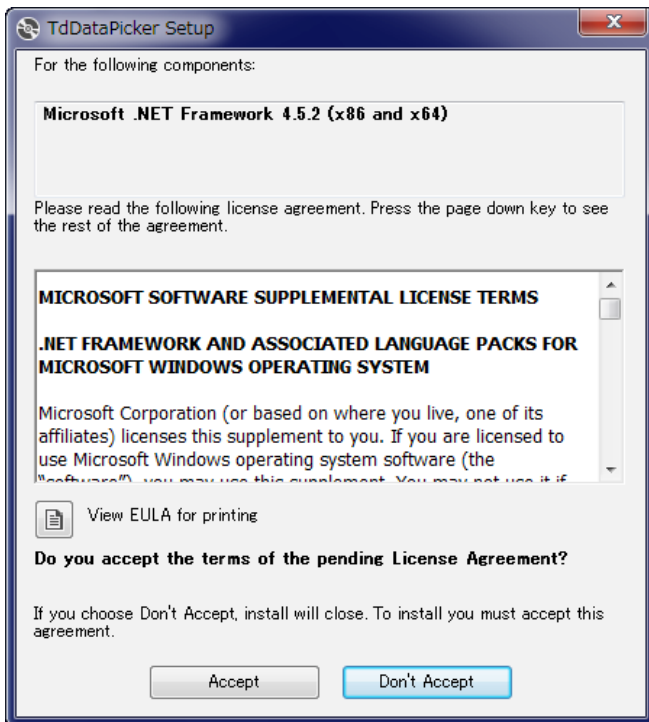
NOTE

The following screen examples are from Windows 10.

1 Double-click the Td01Setup.exe file to open the installation wizard.

NOTE

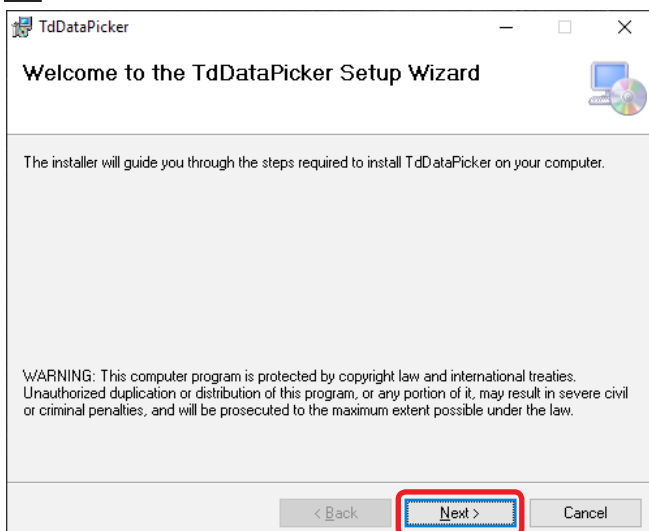
This software uses .NET Framework version 4.5.2 or a newer version. If .NET Framework 4.5.2 or a newer version is not installed, the following window will appear. Follow the instructions in the window and install .NET Framework 4.5.2 or a newer version.



When the computer is connected to the Internet, follow the instructions in the window and install .NET Framework.

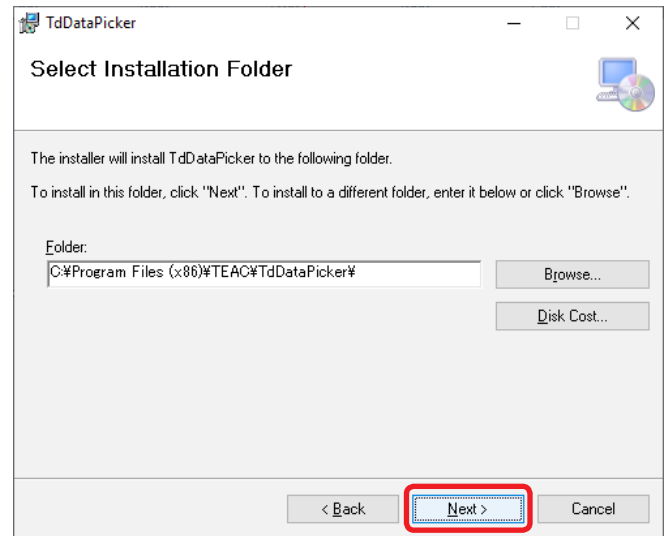
- If the computer is not connected to the Internet, install .NET Framework 4.5.2 or a newer version in another way.

2 Click "Next".

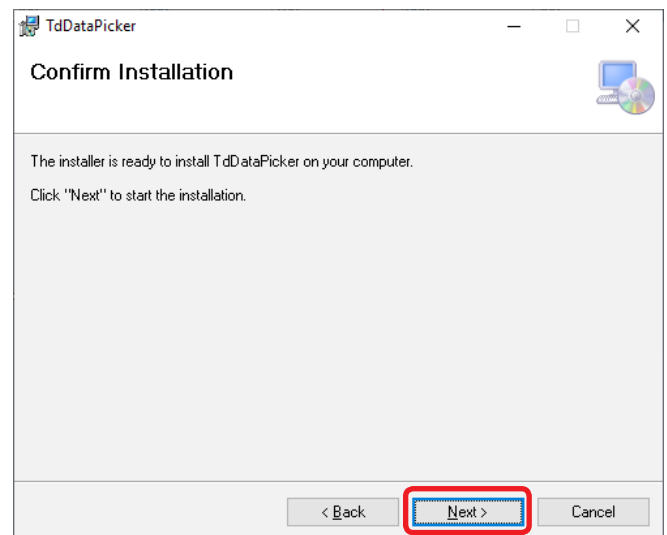


3 Confirm the installation folder, and click "Next".

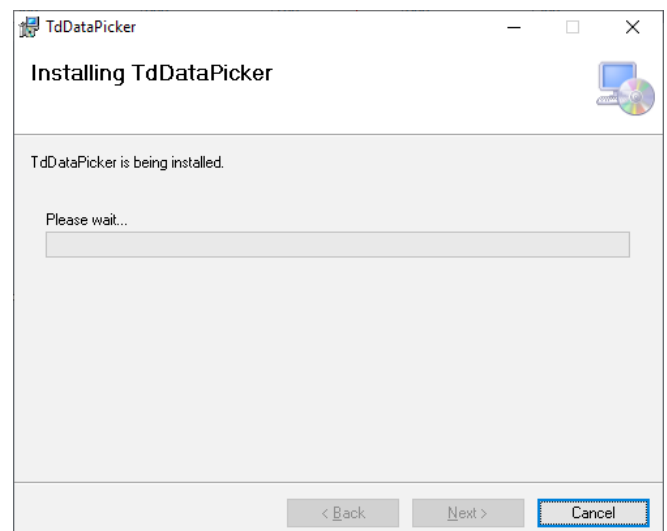
Click "Browse" to change the installation folder.

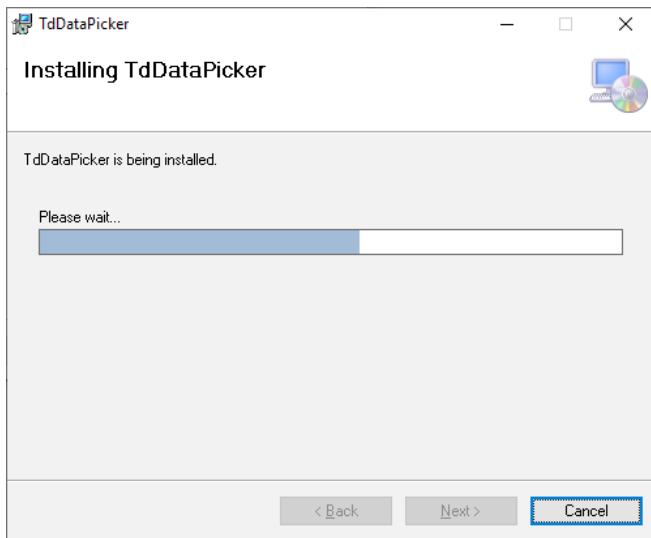


4 Click "Next".



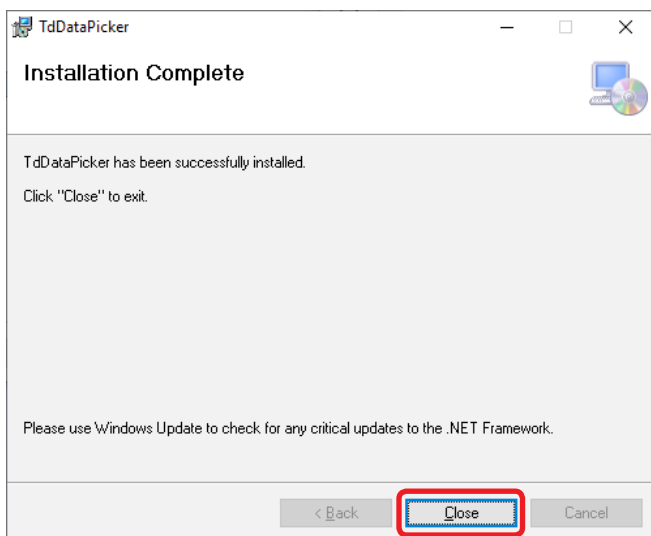
5 Click "Next".





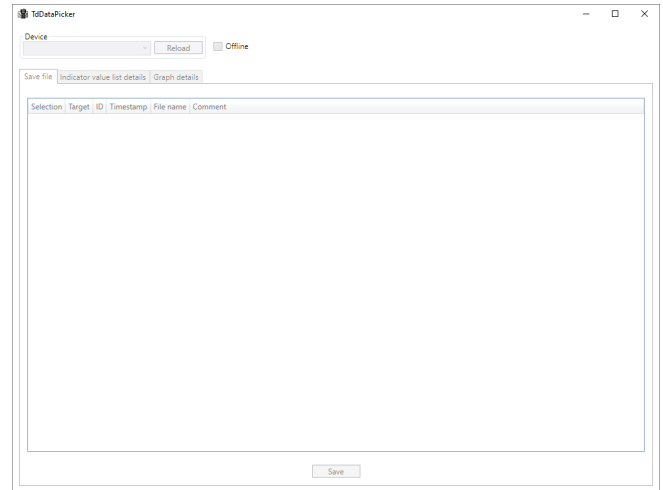
6 If a Windows security pop-up message appears during installation, click “Install” or “Continue Anyway”.

7 When the installation completion screen appears, click “Close” to finish the installation.



Basic operation

1 Launch TdDataPicker.

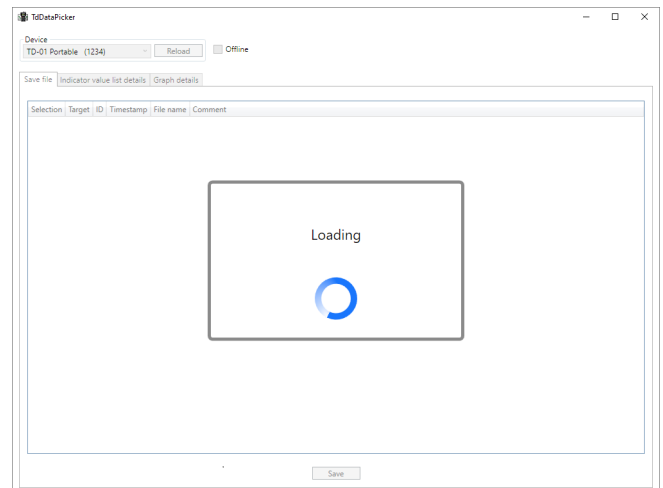


- If a TD-01 Portable is already connected, the screen in the next step will open automatically.

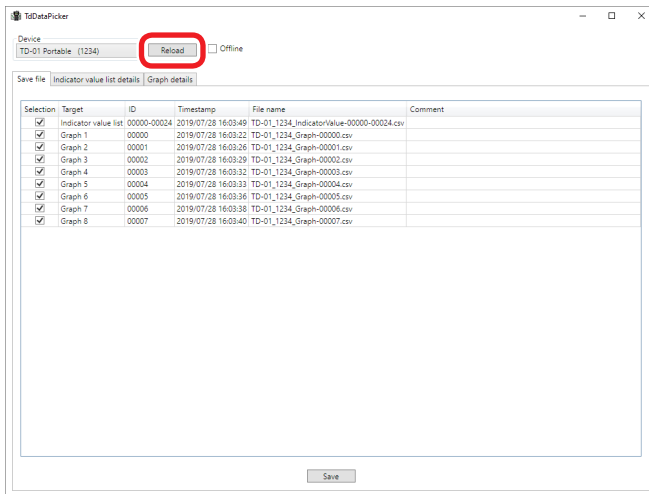
2 Use a USB cable to connect the TD-01 Portable to the computer.

When the computer recognizes the TD-01 Portable, the computer will automatically load the data saved on the TD-01 Portable.

- Do not disconnect the TD-01 Portable while data is being loaded.



When data loading completes, the following screen will open.



- To load the data on the TD-01 Portable again, click the "Reload" button.
- Do not disconnect a TD-01 that has its data shown while the application is running.

Connecting multiple TD-01 Portable units to the same computer

You can distinguish the units by the device numbers that appear in parentheses after the TD-01 Portable device name.

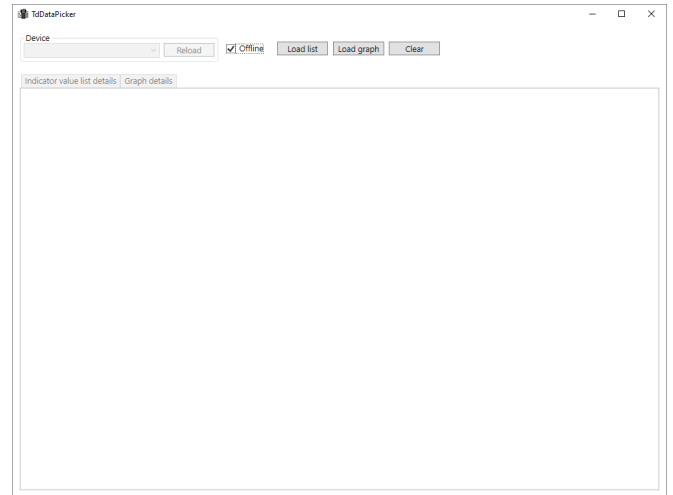
- Set the device numbers in advance on the TD-01 Portable units themselves.

3 Select the "Save file", "Indicator value list details" or "Graph details" tab to save or show data.

The following sections explain the use of the tabs.

Loading saved files

By putting a check next to "Offline" at the top of the window, data that has been saved using "Save file" can be loaded and shown.



Loading lists

Press the "Load list" button to open a file loading dialog.

Selecting and opening a list file will open the "Indicator value list details" tab, showing the indicator value list.

- Previously shown data will disappear.

Loading graphs

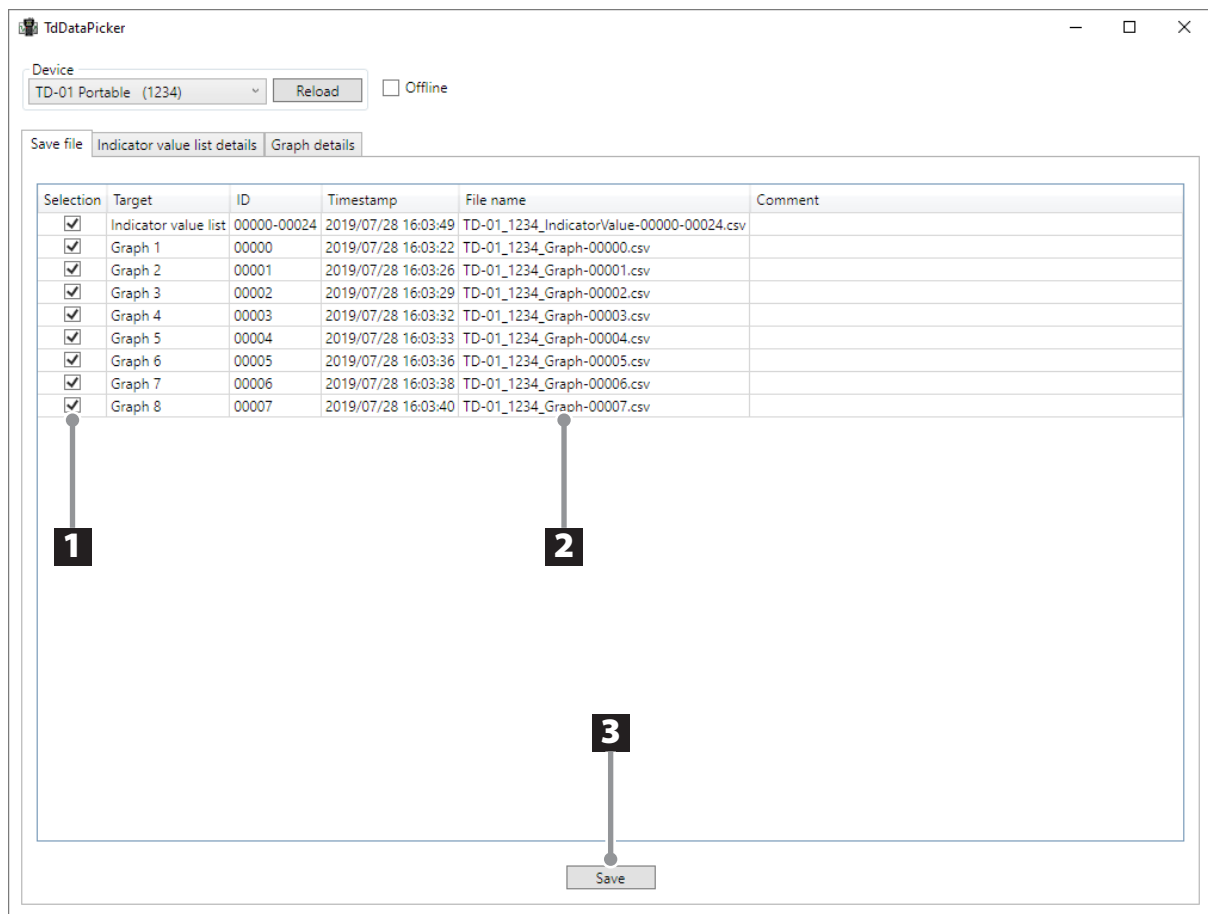
Press the "Load graph" button to open a file loading dialog.

Selecting and opening a graph data file will open the "Graph details" tab, showing the graph.

- Previously shown data will not disappear. It will continue to be added. Multiple sets of graph data can be loaded (sequentially or simultaneously).

Clearing data

Press the "Clear" button to clear all loaded data.



Saving files

The measurement data saved on a TD-01 Portable can be saved on the computer in CSV format.

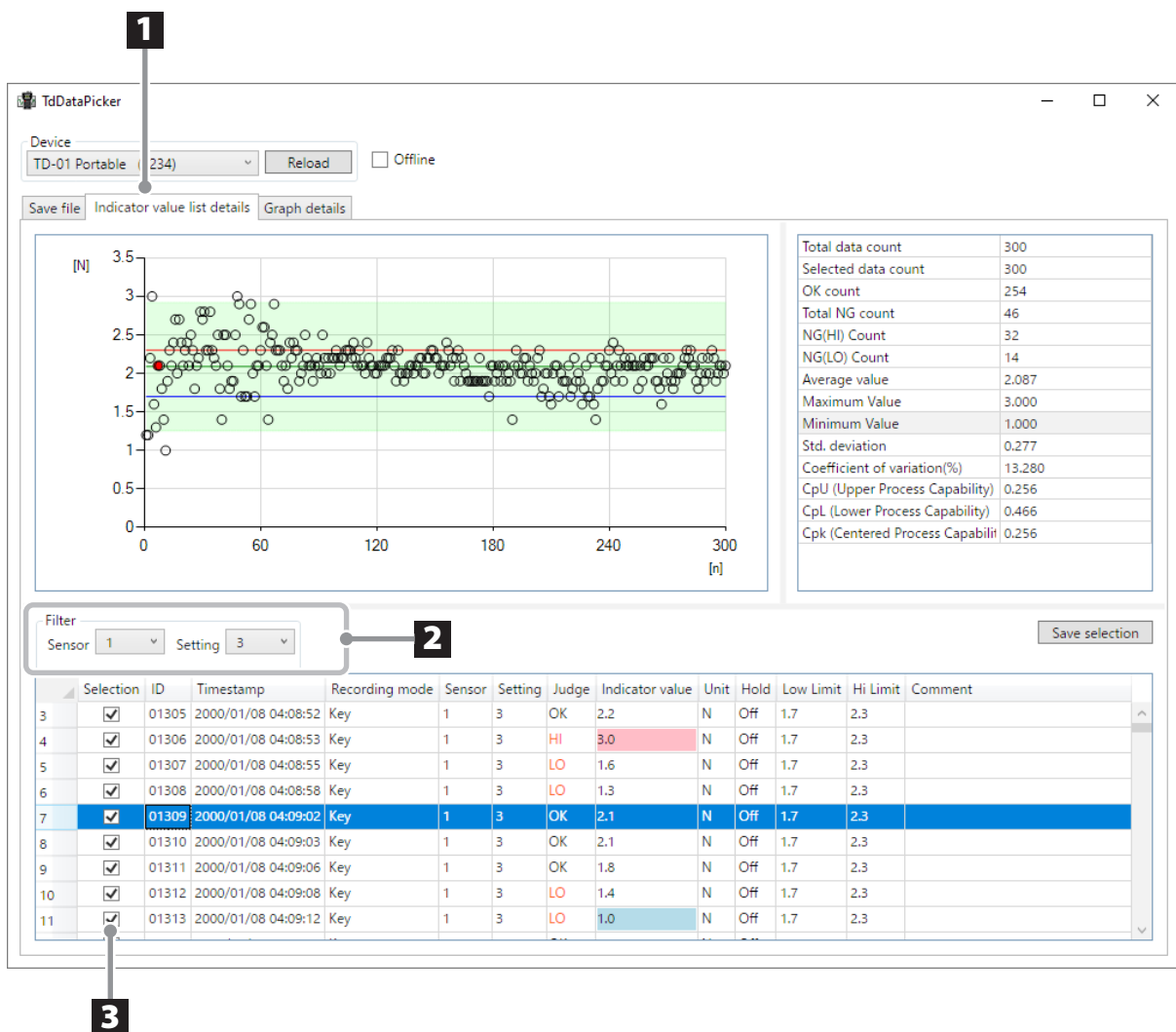
1 Put check marks into the Selection column for the data you want to save.

2 Change the saved file names as necessary.

- Default file names are automatically generated.

3 Click the save button to save the data.

- UTF-8 with BOM (Byte Order Mark) is used for the character code.
- All the data in the indicator value list will be output as a single file. If you only want to output selected data to a file, see "Indicator value list details view" on page 6.
- A separate file is created for each data graph.



Indicator value list details view

You can check the indicator value list data saved on a TD-01 Portable.

1 Select the "Indicator value list details" tab.

2 Select the sensor and setting number to show in the graph.

Select "All" to show all data.

3 Put check marks into the Selection column for the data you want to plot.

- Click the "Save selection" button at the top right of the table to save only the selected data as CSV data.

Graph explanation

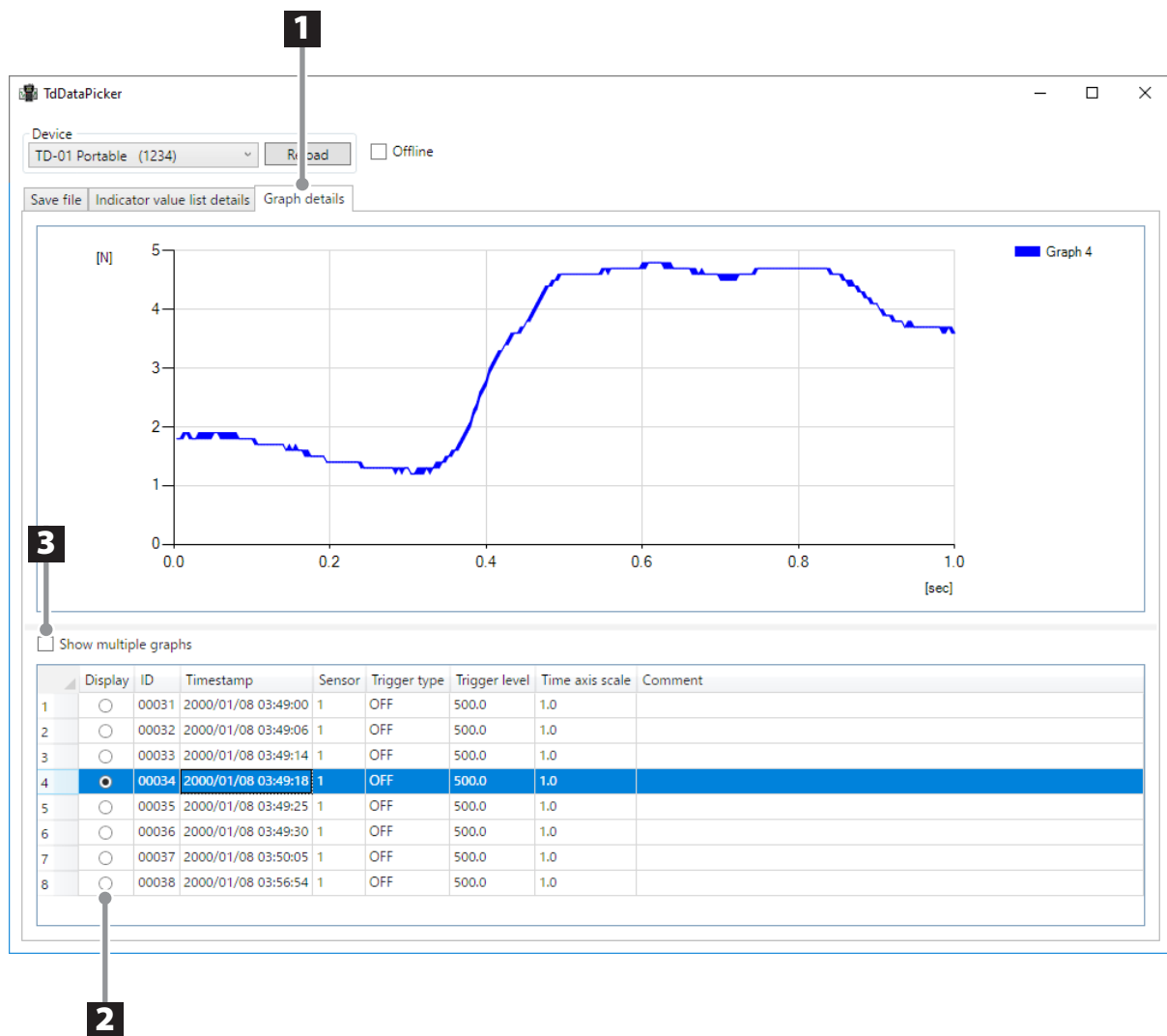
- The vertical axis is automatically generated.
- The horizontal axis (n) is the selected data number.
- High limit and low limit lines are drawn on the graph. However, if there are different high limits and low limits within the selected data, lines will not be drawn.
- Click on a plot point (O) to highlight the corresponding data in the graph.
- The range that corresponds to 3σ is shown in light green.

Table explanation

- The table can be sorted by each item. Click the item that you want to use for sorting.
- Click a data line in the table to make the corresponding plot point (O) appear red.

Statistical calculations

- The selected data is used for the calculations



Graph details

You can show the data graphs saved on a TD-01 Portable.

1 Select the “Graph details” tab.

- By default, the first data graph is shown.

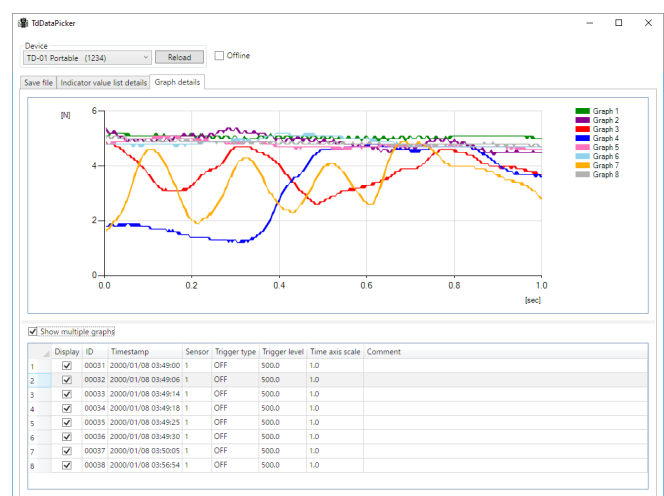
2 Put check marks for the data you want to show.

The data that has been marked with a check will be shown.

3 To show multiple graphs, put a check in the “Show multiple graphs” checkbox.

This will enable the selection of multiple items, and the data graphs that have been marked with a check will be shown layered.

- You cannot put a check mark by data that has a different time axis setting than graphed data that is already marked with a check.



Notice Regarding Third-party Software

This product includes the following software that TEAC Corporation has received permission to use from third parties either directly or indirectly.

ReactiveProperty

The MIT License (MIT)

Copyright (c) 2016 neuecc, xin9le, okazuki

Permission is hereby granted, free of charge, to any person obtaining a copy of this software and associated documentation files (the "Software"), to deal in the Software without restriction, including without limitation the rights to use, copy, modify, merge, publish, distribute, sublicense, and/or sell copies of the Software, and to permit persons to whom the Software is furnished to do so, subject to the following conditions:

The above copyright notice and this permission notice shall be included in all copies or substantial portions of the Software.

THE SOFTWARE IS PROVIDED "AS IS", WITHOUT WARRANTY OF ANY KIND, EXPRESS OR IMPLIED, INCLUDING BUT NOT LIMITED TO THE WARRANTIES OF MERCHANTABILITY, FITNESS FOR A PARTICULAR PURPOSE AND NONINFRINGEMENT. IN NO EVENT SHALL THE AUTHORS OR COPYRIGHT HOLDERS BE LIABLE FOR ANY CLAIM, DAMAGES OR OTHER LIABILITY, WHETHER IN AN ACTION OF CONTRACT, TORT OR OTHERWISE, ARISING FROM, OUT OF OR IN CONNECTION WITH THE SOFTWARE OR THE USE OR OTHER DEALINGS IN THE SOFTWARE.

Apache License

Version 2.0, January 2004

<http://www.apache.org/licenses/>

TERMS AND CONDITIONS FOR USE, REPRODUCTION, AND DISTRIBUTION

1. Definitions.

"License" shall mean the terms and conditions for use, reproduction, and distribution as defined by Sections 1 through 9 of this document.

"Licensor" shall mean the copyright owner or entity authorized by the copyright owner that is granting the License.

"Legal Entity" shall mean the union of the acting entity and all other entities that control, are controlled by, or are under common control with that entity. For the purposes of this definition, "control" means (i) the power, direct or indirect, to cause the direction or management of such entity, whether by contract or otherwise, or (ii) ownership of fifty percent (50%) or more of the outstanding shares, or (iii) beneficial ownership of such entity.

"You" (or "Your") shall mean an individual or Legal Entity exercising permissions granted by this License.

"Source" form shall mean the preferred form for making modifications, including but not limited to software source code, documentation source, and configuration files.

"Object" form shall mean any form resulting from mechanical transformation or translation of a Source form, including but not limited to compiled object code, generated documentation, and conversions to other media types.

"Work" shall mean the work of authorship, whether in Source or Object form, made available under the License, as indicated by a copyright notice that is included in or attached to the work (an example is provided in the Appendix below).

"Derivative Works" shall mean any work, whether in Source or Object form, that is based on (or derived from) the Work and for which the editorial revisions, annotations, elaborations, or other modifications represent, as a whole, an original work of authorship. For the purposes of this License, Derivative Works shall not include works that remain separable from, or merely link (or bind by name) to the interfaces of, the Work and Derivative Works thereof.

"Contribution" shall mean any work of authorship, including the original version of the Work and any modifications or additions to that Work or Derivative Works thereof, that is intentionally submitted to Licensor for inclusion in the Work by the copyright owner or by an individual or Legal Entity authorized to submit on behalf of the copyright owner. For the purposes of this definition, "submitted" means any form of electronic, verbal, or written communication sent to the Licensor or its representatives, including but not limited to communication on electronic mailing lists, source code control systems, and issue tracking systems that are managed by, or on behalf of, the Licensor for the purpose of discussing and improving the Work, but excluding communication that is conspicuously marked or otherwise designated in writing by the copyright owner as "Not a Contribution."

"Contributor" shall mean Licensor and any individual or Legal Entity on behalf of whom a Contribution has been received by Licensor and subsequently incorporated within the Work.

2. Grant of Copyright License. Subject to the terms and conditions of this License, each Contributor hereby grants to You a perpetual, worldwide, non-exclusive, no-charge, royalty-free, irrevocable copyright license to reproduce, prepare Derivative Works of, publicly display, publicly perform, sublicense, and distribute the Work and such Derivative Works in Source or Object form.

3. Grant of Patent License. Subject to the terms and conditions of this License, each Contributor hereby grants to You a perpetual, worldwide, non-exclusive, no-charge, royalty-free, irrevocable (except as stated in this section) patent license to make, have made, use, offer to sell, sell, import, and otherwise transfer the Work, where such license applies only to those patent claims licensable by such Contributor that are necessarily infringed by their Contribution(s) alone or by combination of their Contribution(s) with the Work to which such Contribution(s) was submitted. If You institute patent litigation against any entity (including a cross-claim or counterclaim in a lawsuit) alleging that the Work or a Contribution incorporated within the Work constitutes direct or contributory patent infringement, then any patent licenses granted to You under this License for that Work shall terminate as of the date such litigation is filed.

4. Redistribution. You may reproduce and distribute copies of the Work or Derivative Works thereof in any medium, with or without modifications, and in Source or Object form, provided that You meet the following conditions:

- (a) You must give any other recipients of the Work or Derivative Works a copy of this License; and
- (b) You must cause any modified files to carry prominent notices stating that You changed the files; and
- (c) You must retain, in the Source form of any Derivative Works that You distribute, all copyright, patent, trademark, and attribution notices from the Source form of the Work, excluding those notices that do not pertain to any part of the Derivative Works; and
- (d) If the Work includes a "NOTICE" text file as part of its distribution, then any Derivative Works that You distribute must include a readable copy of the attribution notices contained within such NOTICE file, excluding those notices that do not pertain to any part of the Derivative Works, in at least one of the following places: within a NOTICE text file distributed as part of the Derivative Works; within the Source form or documentation, if provided along with the Derivative Works; or, within a display generated by the Derivative Works, if and wherever such third-party notices normally appear. The contents of the NOTICE file are for informational purposes only and do not modify the License. You may add Your own attribution notices within Derivative Works that You distribute, alongside or as an addendum to the NOTICE text from the Work, provided that such additional attribution notices cannot be construed as modifying the License.

You may add Your own copyright statement to Your modifications and may provide additional or different license terms and conditions for use, reproduction, or distribution of Your modifications, or for any such Derivative Works as a whole, provided Your use, reproduction, and distribution of the Work otherwise complies with the conditions stated in this License.

5. Submission of Contributions. Unless You explicitly state otherwise, any Contribution intentionally submitted for inclusion in the Work by You to the Licensor shall be under the terms and conditions of this License, without any additional terms or conditions. Notwithstanding the above, nothing herein shall supersede or modify the terms of any separate license agreement you may have executed with Licensor regarding such Contributions.
6. Trademarks. This License does not grant permission to use the trade names, trademarks, service marks, or product names of the Licensor, except as required for reasonable and customary use in describing the origin of the Work and reproducing the content of the NOTICE file.
7. Disclaimer of Warranty. Unless required by applicable law or agreed to in writing, Licensor provides the Work (and each Contributor provides its Contributions) on an "AS IS" BASIS, WITHOUT WARRANTIES OR CONDITIONS OF ANY KIND, either express or implied, including, without limitation, any warranties or conditions of TITLE, NON-INFRINGEMENT, MERCHANTABILITY, or FITNESS FOR A PARTICULAR PURPOSE. You are solely responsible for determining the appropriateness of using or redistributing the Work and assume any risks associated with Your exercise of permissions under this License.
8. Limitation of Liability. In no event and under no legal theory, whether in tort (including negligence), contract, or otherwise, unless required by applicable law (such as deliberate and grossly negligent acts) or agreed to in writing, shall any Contributor be liable to You for damages, including any direct, indirect, special,

incidental, or consequential damages of any character arising as a result of this License or out of the use or inability to use the Work (including but not limited to damages for loss of goodwill, work stoppage, computer failure or malfunction, or any and all other commercial damages or losses), even if such Contributor has been advised of the possibility of such damages.

9. Accepting Warranty or Additional Liability. While redistributing the Work or Derivative Works thereof, You may choose to offer, and charge a fee for, acceptance of support, warranty, indemnity, or other liability obligations and/or rights consistent with this License. However, in accepting such obligations, You may act only on Your own behalf and on Your sole responsibility, not on behalf of any other Contributor, and only if You agree to indemnify, defend, and hold each Contributor harmless for any liability incurred by, or claims asserted against, such Contributor by reason of your accepting any such warranty or additional liability.

END OF TERMS AND CONDITIONS

APPENDIX: How to apply the Apache License to your work.

To apply the Apache License to your work, attach the following boilerplate notice, with the fields enclosed by brackets "[]" replaced with your own identifying information. (Don't include the brackets!) The text should be enclosed in the appropriate comment syntax for the file format. We also recommend that a file or class name and description of purpose be included on the same "printed page" as the copyright notice for easier identification within third-party archives.

Copyright [yyyy] [name of copyright owner]

Licensed under the Apache License, Version 2.0 (the "License");
you may not use this file except in compliance with the License.
You may obtain a copy of the License at

<http://www.apache.org/licenses/LICENSE-2.0>

Unless required by applicable law or agreed to in writing, software distributed under the License is distributed on an "AS IS" BASIS, WITHOUT WARRANTIES OR CONDITIONS OF ANY KIND, either express or implied. See the License for the specific language governing permissions and limitations under the License.